

# miglionico

DENTAL EQUIPMENT



LANGUAGE





QUALITY, ERGONOMICS,  
HYGIENE AND DESIGN

MADE IN ITALY



## LARGE LEG ROOM

The suspended patient chair, the independent and reduced base, and the thin upper part of the backrest optimize the leg room and allow the dentist and their assistant to work as close as possible to the patient and the treatment area.



## ERGONOMICS AND ACCESSIBILITY

Thanks to the chair's motorized rotation, accessing it is extremely comfortable for all kinds of patients, including children, the elderly, and people with reduced mobility. By rotating 180° around its axis, the patient chair creates an obstacle-free area, greatly facilitating access for the patient.

To ensure optimal working ergonomics and maximum comfort for the patient, the backrest and legrest operate with a synchronized mechanism. The legrest features a knee-break design, which separates it from the seat, and is equipped with a motorized retractable footrest that enhances patient comfort.





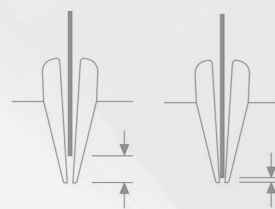
**NEW**  
PARTNERSHIP

**EO** Endo.  
Optimized.

## REVOLUTIONARY CANAL PREPARATION TECHNOLOGY

**Miglionico** has selected **Morita** as its premium partner to provide users with increasingly advanced and exclusive solutions thanks to the Morita micromotor kit, which features an integrated apex locator. The compact head of the 10:1 contra-angle enables dentists to effortlessly access molar regions while also incorporating a probe for measuring root canals.

## THE NEW MOVEMENT IN ENDODONTICS



**TORQUE REVERSE:** The file stops and reverses when it reaches the end of the set working length. This mode can be paired with the following apex locator functions:

**Apical reverse:** the file goes into reverse automatically as soon as a pre-set position to the apex has been reached.

**Apical stop:** the motor stops automatically upon reaching a pre-set reference point.

**OTR:** has been uniquely designed by Morita to ensure safe and efficient canal preparation while minimizing the risk of file binding and breakage. This feature allows the user to customize both the torque value and the rotation angle of the file. When the torque applied to the file exceeds the set limit, the file instantly reverses 90° and then rotates forward at least 180°. Alternatively, the reverse rotation can be set to 120°, followed by a forward rotation of 240°. Additionally, the OTR function can seamlessly integrate with both the apical stop and apical reverse functions.



The dentist's console is designed to accommodate up to 6 instruments and is available in the following versions:

- **CONTINENTAL**
- **INTERNATIONAL**
- **CART**



The delivery supports of the **CONTINENTAL** version have light hoses that can be extended up to 98 cm, no traction and a patented system for lateral movement and instrument repositioning system. The instrument silicon mat, the removable handles and the stainless-steel tray-holder can be sterilized in the autoclave.

The **INTERNATIONAL** hanging hoses version of the dentist's console can extend its surface by adding a support on the left side.

The **CART** version is made of painted steel, to ensure greater stability when moving. It can be connected to the unit or used as a standalone cart.

# COMPLETE CONTROL, INTUITIVE USE



**OTR AND TORQUE REVERSE MODE**  
This dedicated screen allows users to easily switch between OTR and TORQUE REVERSE mode.



**MANUAL APEX LOCATOR MODE**  
The apex locator can also operate in manual mode by connecting the external probe to the operator panel. After pressing the dedicated button on the top menu, a screen featuring a colored bar will be displayed. This bar will light up and emit a beeping sound to signal the proximity of the apex, providing clear and immediate feedback to the user.



**SCALER**  
This dedicated menu allows you to:

- operate using the Endo, Scaling or Perio mode;
- manage the peristaltic pump flow;
- activate the proportional mode.



## RESTORATIVE - ENDO - TAPEX LOCATOR MORITA - SURGERY

The basic version of the MCX Bien Air micromotor features conservative and endodontic functions. The surgical module including the MX2 Bien Air micromotor and peristaltic pump can perform surgical, endodontic and conservative treatments.

The MX2 has an adjustable torque that goes from 0,3 Ncm up to more than 70 Ncm according to the chosen handpiece. The cruise control function, exclusively customized for Miglionico, allows you to operate without keeping your foot on the foot control lever.

## INTEGRATED MULTIMEDIA SYSTEMS

An advanced technological system that enables the implementation of a microscope or an x-ray unit with a wireless palmtop on the dental unit without the need for any other installation points.



## DENTIST'S CONSOLE

The control panel is easy to sanitize thanks to security screen lock functions.

An innovative, intuitive and functional system guarantees optimal content management thanks to the countless customization possibilities.

The large 7" glass colour screen and essential graphics allow the user to control both the instrument parameters and the functions and movements of the unit on the same screen simply and quickly, thus optimizing operating times and safety.

All modules are created with the industry's leading handpiece manufacturers (BIEN AIR, EMS, SATELEC, LUZZANI, NSK) to ensure reliability and durability.



In the optional exclusive complete version, the digital intraoral camera **MI-CAM** (with Zoom, Macro, Full Autofocus, and Manual focus functions) completely made of aluminum and glass to protect the optical sensor, is a module included on the dentist console within easy reach.

The **IMAGE software by Miglionico**, which interacts with the camera, allows the operator to control the camera functions through the foot control to take/ store photos, record and view videos, leaving the user free-handed, increasing accuracy and interaction with the patient. Furthermore, when the camera is included in the **FULL MEDIA PACK**, it makes it possible to transfer images directly to your clinic PC.



An embedded and high-tech system encloses Miglionico's multimedia performance, which allows the operator to use video and radio diagnostic devices in a practical, intuitive and fast way, and enables our units to be **interconnected** with other multimedia systems to be implemented or already present in a dental clinic.





## LED COMMUNICATION

The unit features an integrated **LED** system to enhance the design and visually indicate to the dentist the activation and status of the instruments and integrated functions.

The system comes with a controller to create a relaxing atmosphere for the patient and to intuitively interact with the functionalities of the unit.



## HYDRO CASE OPENING

Just one single touch: motorized and easy opening of the hydro case.

Accessing the hydro case has never been this easy: the cover is released upon touching the capacitive button to be manually removed and allow the inspection of the hydro case.

## SUCTION STOP

The unit features a dedicated switch to stop the suction system.

It is a footswitch beneath the patient chair, easy to find and very convenient when the dentist is operating.

## MOTORIZED CUSPIDOR

The cuspidor features smooth, rounded edges and is coated in Gelcoat, providing excellent resistance and waterproofing, while also making it easy to clean and sanitize. It is equipped with a motorized rotating mechanism that automatically activates when recalling the rinse position or the zero position. This design optimizes workflow and minimizes the risk of interference with the patient chair.





## HYGIENE AND DETAILS THAT MAKE THE DIFFERENCE

### MDS SYSTEM

Continuous disinfection of water circuits and intensive disinfection system (MDS+).

### MDS

The system continuously and automatically mixes the WK liquid with mains water or from the bottle, preventing the formation of limescale and biofilm with consequent reduction of bacterial load. Moreover, it contributes to the correct functioning of the spray function of the instruments.

### MDS+

This system can be activated from the dentist's control panel. After positioning the handpieces inside the dedicated autoclavable housing, you can start the intensive disinfection cycle from the control panel. If the intensive disinfection cycle is not selected, the MDS+ system will work with the same basic mode as the MDS system.

### SUCTION HOSES DISINFECTION

An in-built system on the hydro case which allows to easily disinfect the suction hoses directly on the unit, without needing other manual systems.

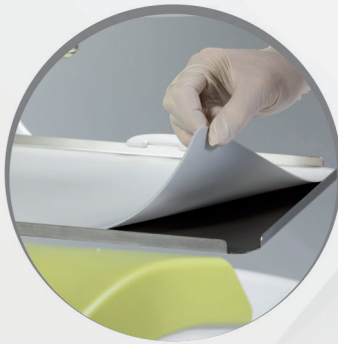
### POSITION OF THE CHAIR FOR LEFT HANDED OPERATORS



## AUTOCLAVABLE PARTS



Instrument silicone mat



Steel tray holder



Removable dentist's console handles

## ASSISTANT'S CONSOLE

The assistant's console features a control panel with a glass surface and a CLEAN lock-screen function, which blocks the panel's buttons for easy and quick sanitization. It is easy to manage due to its clean-cut lines and ergonomic handle.

The console is installed on a pantographic arm that allows for both horizontal and vertical movement, enabling the assistant to work while standing or sitting.

It is designed to accommodate up to two suction hoses and two additional instruments, and its large surface, covered by a silicone mat, can also hold a keyboard. If the keyboard is connected to a PC, it allows you to manage and display content in real-time.

## THIRD SUCTION HOSE

An absolute novelty for dental units: a third suction hose to vacuum the conscious sedation fumes. It is a very useful optional for those who perform surgical treatments.



## PATIENT CHAIR



Standard soft comfort padding and optional memory foam backrest.



Lumbar support on all types of backrests.



Seamless upholstery to ensure a quick and perfect sanitization.

The backrest comes in two versions: **XL MEMORY FOAM** and **STANDARD**. It has an anatomical shape designed to ensure comfort for all types of patients. The chair features soft and elegant lines, comfortable padding, and is covered in seamless medical Skai leather, making it easy to clean and comfortable to use.



STANDARD



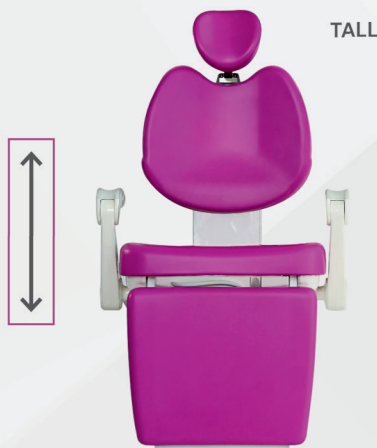
XL MEMORY FOAM

## ADAPTIVE BACKREST

The patient can experience great comfort and feel flawlessly embraced thanks to the height adjustment of the backrest and the patented motorized vertical movement system.

The three height modes can be set intuitively from the dedicated icons on the display.

The adaptive backrest system is available as an option on all types of Miglionico backrests, and ensures the correct positioning of the patient's head on the completely adjustable headrest, whether paediatric (from 1,30m) or adult.



TALL



MEDIUM



SHORT

## FOOT CONTROLS

The foot control is solid and well-balanced with a steel base that guarantees total stability while working.

It is equipped with a practical retractable handle to move it.



The foot control is available in the standard or push version, both wired or wireless.

## DIMENSIONS AND SAFETY SYSTEMS

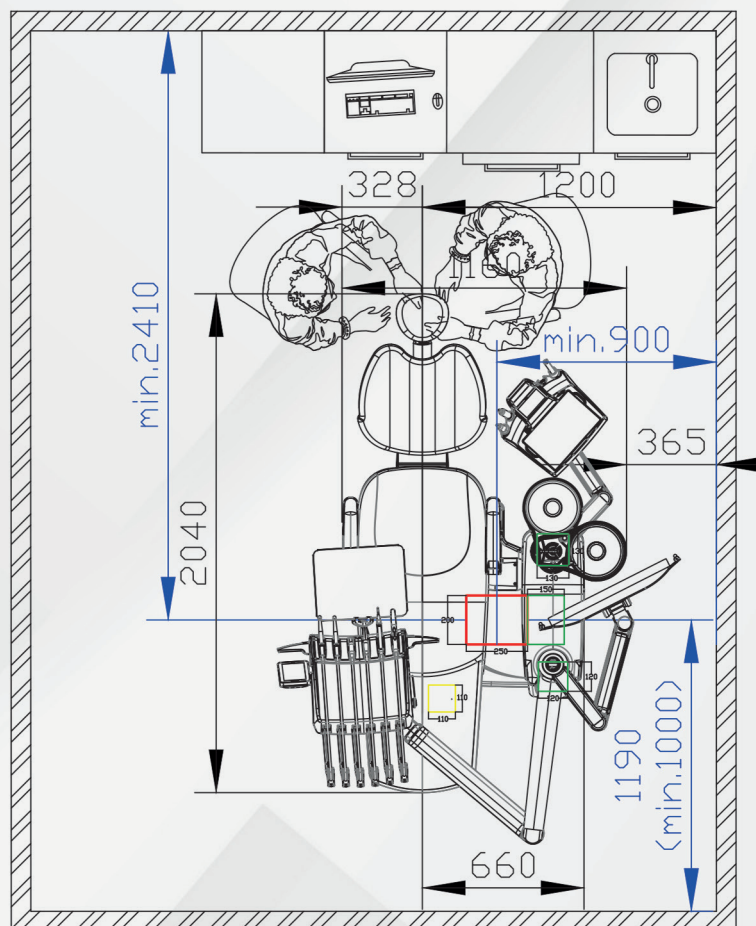
### SAFETY SYSTEMS

The chair features 4 safety systems that activate when an obstacle comes between the moving parts of the unit.

When the safety systems activate, the entire chair lifts to release the obstacle that hinders the movement.

The emergency switches are placed:

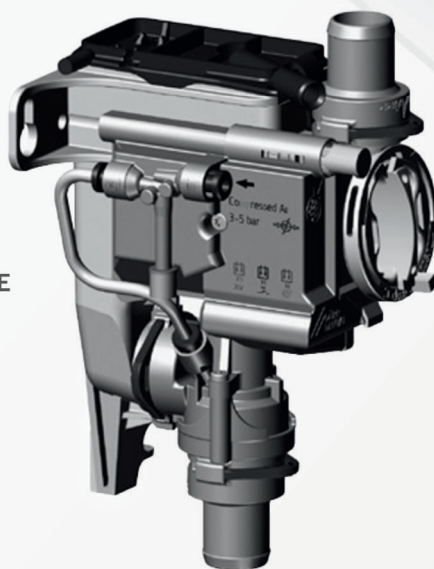
- Under the backrest
- Under the supporting arm of the chair
- Under the chair
- Under the cuspidor



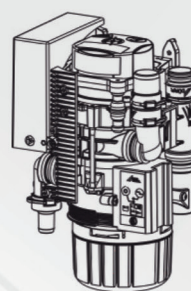
**OVERALL DIMENSIONS**  
(Measurements in millimeters)

### INTEGRATED SUCTION SYSTEMS

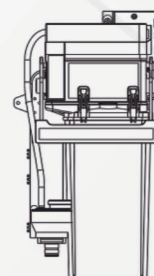
Standard predisposition for wet suction systems. Other in-built systems into the dental unit are available in case of dry suction systems and of devices to comply with the regulation about the amalgam disposal.



**CUSPIDOR DRAIN VALVE**



**AMALGAM SEPARATOR**



**AIR/WATER SEPARATOR**



**miglionico**  
DENTAL EQUIPMENT

**Miglionico S.r.l.**

Via Molise, Lotti 67/68 Z.I.

70021 - Acquaviva delle Fonti (BA) ITALY

P. Iva: 05306940726

Tel +39 080 759552

[www.miglionico.eu](http://www.miglionico.eu)

[info@miglionico.net](mailto:info@miglionico.net)



Italy:

[commerciale@miglionico.net](mailto:commerciale@miglionico.net)

Eu & Extra Eu

[export@miglionico.net](mailto:export@miglionico.net)

