



miglionico
DENTAL EQUIPMENT



NG

LANGUAGE





RELIABILITY AND TECHNOLOGY, ADAPTABLE TO ANY STYLE

SIMPLE AND VERSATILE TO USE, IT GUARANTEES HIGH PERFORMANCE
AND MAXIMUM HYGIENE THANKS TO ITS CHARACTERISTICS





Dentist's console



The NG dental unit is characterized by an adjustable glass-encapsulated control panel with capacitive touch technology. Rotating the panel allows you to always enjoy the right view of the display both while working seated or standing. The control panel is easy to sanitize, thanks to security screen lock functions.

Assistant's Console

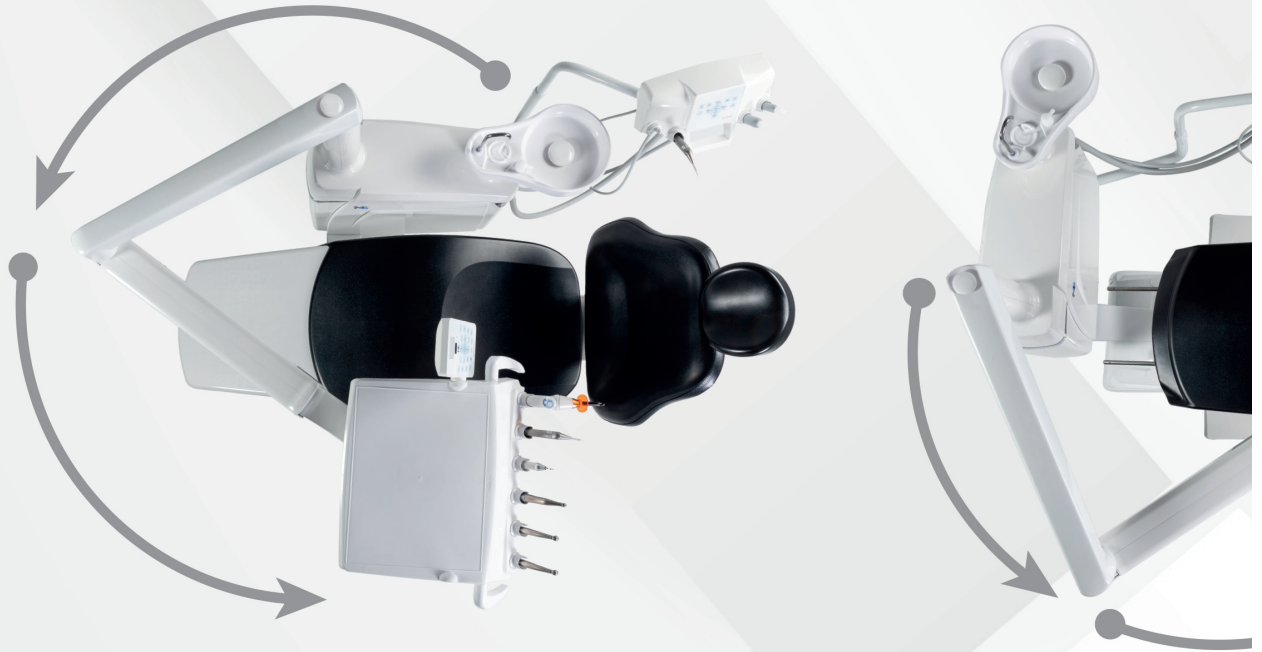


The clean lines, free of sharp edges, and the comfortable ergonomic handle make handling the console extremely simple. The assistant's console is mounted on a double-jointed arm and is made of solid, scratch-resistant, and chemical-resistant material. The assistant's console is equipped with a control panel with a glass surface and capacitive touch technology, and is designed to accommodate two hoses for surgical suction and two additional instruments.

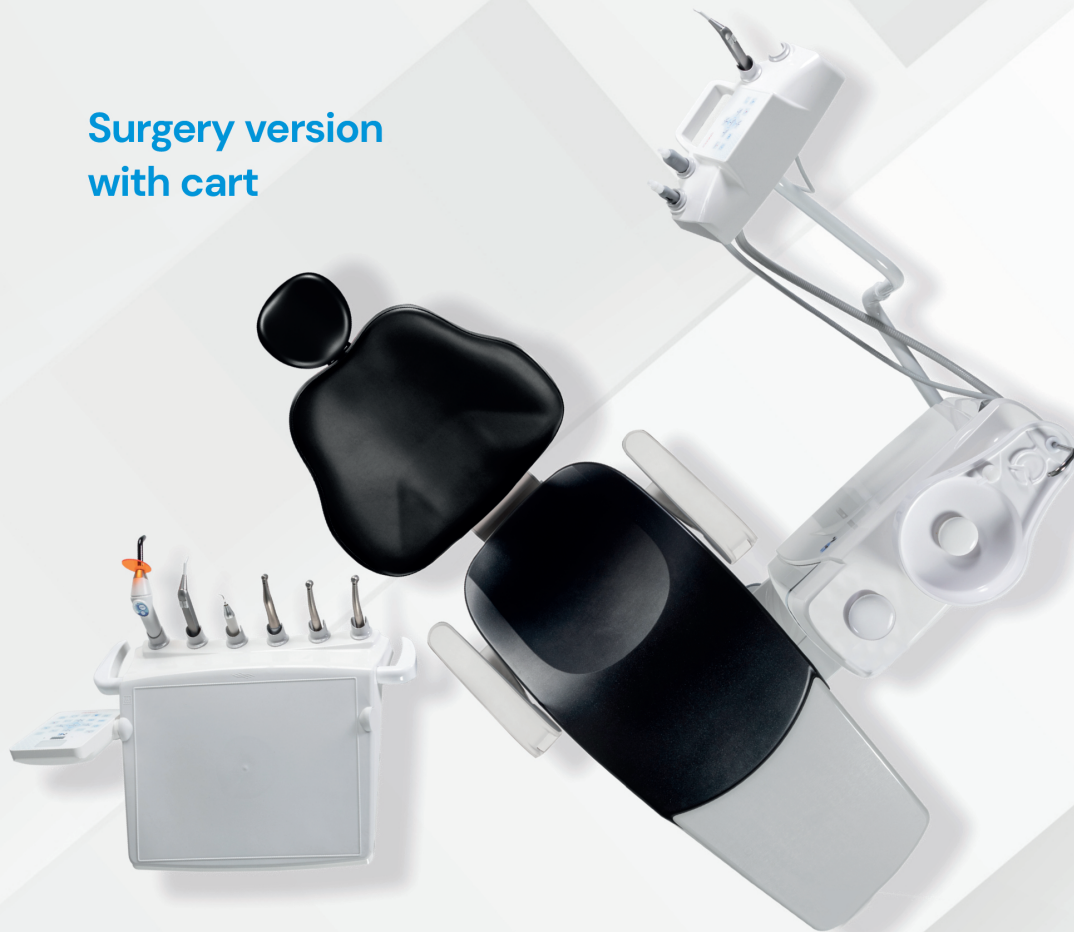




NG ambidextrous version



Surgery version with cart





Adjustable backrest



As an option, the backrest with motorized vertical excursion is also available, which can be managed from the control panel to ensure the correct positioning of the patient's head on the headrest, whether **pediatric** or **adult**.





MDS / MDS+ SYSTEMS

Systems for the decontamination of hydro circuits with the WK liquid by Metasys.

MDS, the system continuously mixes the WK liquid with mains water or water coming from the bottle, preventing the formation of limescale and biofilm with consequent reduction of bacterial load. Moreover, it contributes to the correct functioning of the spray function of the instruments.

MDS+, this system can be activated from the dentist's control panel. After positioning the handpieces inside the dedicated autoclavable housing, you can start the intensive disinfection cycle from the control panel. If the intensive disinfection cycle is not selected, the MDS+ system will work with the same basic mode as the MDS system.

Hygiene

Inside the hydro case, it is possible to install:

ASB SYSTEM

2 Lt bottle for the independent water supply to the instruments of the dentist's console. A bypass valve allows you to select the water type between mains water or water supplied by the bottle.



REMOVABLE AND AUTOCLAVABLE DENTIST'S CONSOLE HANDLE



SURGICAL SUCTION FILTERS FOR EACH HOSE

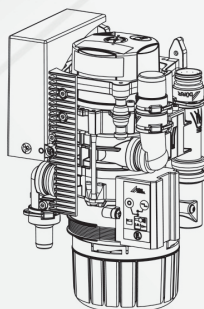


REMOVABLE AND STERILIZABLE CUSPIDOR

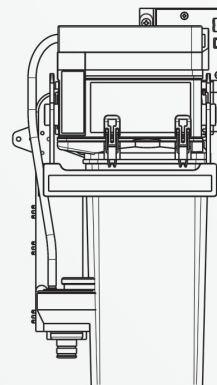
In-built suction systems



CUSPIDOR DRAIN VALVE



AMALGAM SEPARATOR



AIR/WATER SEPARATOR

Standard predisposition for wet suction systems. Availability of in-built systems into the dental unit in case of dry suction systems and of devices to comply with the law in force on the amalgam disposal.





Patient Chair

The chair is designed to offer comfort and good working ergonomics. It is covered in skai medical leather for easy sanitization. The synchronized movement of the backrest and the seat ensures optimal and prevents the sliding effect. The anatomic backrest, with lumbar support, is available in 2 versions: standard for all working ergonomics and wide in memory foam for surgery or greater comfort of the patient, ideal for long-lasting treatments.



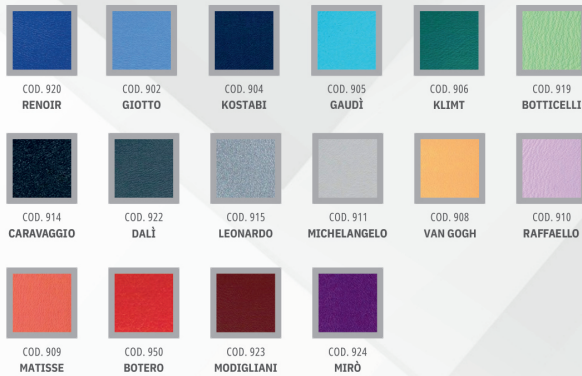
CLASSIC BACKREST



XL MEMORY FOAM BACKREST

Colors

STANDARD COLORS



SPECIAL COLORS



Foot controls

The foot control is solid and well balanced, it has a steel base that guarantees total stability during work, avoiding slips or accidental movements, and is equipped with a practical retractable handle to move it. The foot control is available in standard version, wireless version and push version.





miglionico
DENTAL EQUIPMENT

Miglionico S.r.l.

Via Molise, Lotti 67/68 Z.I.

70021 - Acquaviva delle Fonti (BA) ITALY

P. Iva: 05306940726

Tel +39 080 759552

www.miglionico.eu

info@miglionico.net



Italy:

commerciale@miglionico.net

Eu & Extra Eu

export@miglionico.net

